

Paris Grove Community Update

Paris Grove Village *Takes Shape*

Paris Grove is being developed as a sustainable, long-term accommodation precinct in Australind to support expansion of Albemarle's nearby Kemerton Lithium Hydroxide Plant.

The modern, purpose-built \$140 million village is designed to accommodate around 800 workers and to take pressure off existing rentals and short-term accommodation in the South West.

Over the next few years Paris Grove, located near Australind's Spud Shed, will provide vital workforce accommodation with high-quality villas, meals and recreation facilities incorporated into a landscape-led design.

Work has begun on site in preparation for the arrival of over 200 villas for Kemerton expansion workers and management and you'll notice more construction, landscaping, and installation of an official 'entry statement' in coming weeks and months.

Community Reference Group *Underway*

Albemarle is working hard to smooth the entry of Paris Grove into the Australind community and to ensure effective village management and oversight. The Paris Grove Community Reference Group (CRG) has been formed and is one of the ways we are talking with Australind residents about our plans and receiving feedback.



THE PARIS GROVE WORKFORCE ACCOMMODATION PRECINCT COMMUNITY REFERENCE GROUP

Communication is key, which is why we are very grateful to the dedicated locals who are now part of the CRG, and to the many people who also put up their hands for this voluntary role. The independently selected group, represents the broader community and has the responsibility of providing valuable feedback and input as Paris Grove progresses.

The CRG held its first meeting in July to discuss key responsibilities, the precinct's construction timeline, and operational plans for Paris Grove. The group also met during August to participate in an independently facilitated workshop, to provide input into the Paris Grove Operations Management Plan.

Paris Grove - Part of the Local Community & A Local Employer

We want Paris Grove to be a successful and sustainable part of the Australind community. Albemarle will continue to speak with and to build on the positive relationships started with neighbours - including nearby land holders, businesses, and schools.

We look forward to supporting more local initiatives. Albemarle's Community Grants Program is also helping a range of not-for-profit groups and local projects to make positive impacts across Australind, Bunbury and surrounding areas.

We recently announced ESS Support Services Worldwide (ESS) - part of Compass Group, as Paris Grove's operator with responsibility for running and maintaining catering, accommodation, cleaning, security, health and lifestyle, grounds services and facilities management.

ESS is highly experienced in operating and maintaining modern workforce accommodation in a variety of settings and around 70 people will be employed on a roster to service Paris Grove. A selection of rosters and flexible work hours will be available, check: careers.compass-group.com.au/home-page

More than 330 applications have been submitted by local residents keen to work at Paris Grove village. Albemarle is proud to be providing local opportunities both at Kemerton and Paris Grove workforce accommodation village.

The company will operate and maintain the village accommodation and provide a high-quality rotating menu to cater to all food preferences, along with personalised health and wellbeing programs. Albemarle and Compass Group will work closely to ensure positive psychosocial health and safety for workers at the village, with innovative and responsible management to promote a safe and respectful culture in line with principles of the WA Government's response to the 'Enough is Enough' report.

Paris Grove Community Update

On Site *Now...*

The Shire of Harvey recently approved the building permit for Paris Grove's 200+ villas, along with a Development Application for temporary food and beverage facilities. The first villas are coming to site and from around October the expansion workforce will occupy the village during their rostered swings to help build Kemerton's two new lithium processing trains.

The first 200 rooms are being installed over coming weeks.

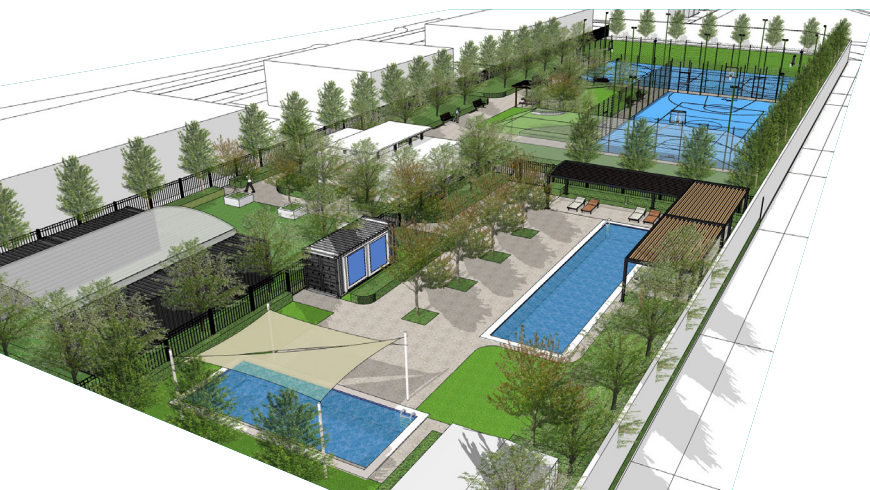
It is early days for Paris Grove construction but over coming weeks and months more buildings, facilities, roadworks and extensive landscaping will be installed as the precinct takes shape.



Still to *Come*

- Construction of the main dining hall & permanent kitchen
- Installation of villas

- Finalisation and construction of recreation facilities
- Installation of the Paris Grove 'entry statement' at the entrance to the precinct – incorporating Aboriginal art elements
- Finalisation of specially commissioned Aboriginal art installations throughout the village
- Landscaping work will be undertaken to create a natural South West retreat for village occupants and a pleasant and integrated view for neighbours.



Concept Design Option

Paris Grove will be an important addition to a vibrant Australind and Albemarle is committed to being a responsible and positive contributor to the local community.

As work on site progresses, we will provide more updates.

Want to find out more about Paris Grove or Kemerton or to receive future community updates via email? You can contact our Community Relations team on **1300 925 400**, or email us here: commAU@albemarle.com